

# MOONFLEECE

**PHILIP RIDLEY**

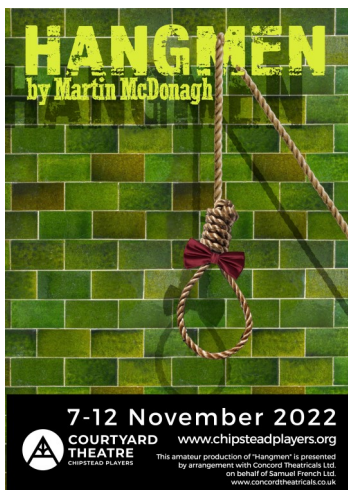


**6 - 10 September 2022**



**COURTYARD  
THEATRE**  
CHIPSTEAD PLAYERS

# Coming up at The Courtyard Theatre



## HANGMEN

Directed by Anne Gregory

7 - 12 November 2022

In his small pub in Oldham in the mid-1960s, Harry is something of a local celebrity. But what's the second-best hangman in England to do on the day they've abolished hanging? Amongst the cub reporters and sycophantic pub regulars, dying to hear Harry's reaction to the news, a peculiar stranger lurks, with a very different motive for his visit. This is a dark comedy about vengeance with all the top-notch twists, violence and laughs we have come to expect from the writer of many successful plays and films, including *Three Billboards Outside Ebbing, Missouri*.

## THE SNOW QUEEN

Directed by Sharon Laws and Rick Thompsett

11 - 21 January 2023

Not a traditional pantomime, but a fairy tale and a wonderful adventure story. When our young heroine Gerda sets off in search of her friend, Kay, and rescues him from the icy clutches of the Snow Queen, she little realises that she has embarked on an epic journey that will lead her into many scrapes. Come and join Gerda as she meets princes, princesses, eskimos, robbers, reindeer, ravens and icemen in this exciting show with music, for all the family.



Book online at [www.chipsteadplayers.org](http://www.chipsteadplayers.org) or at the Box Office during the shows  
The Courtyard Theatre, Hazelwood Lane, Chipstead, CR5 3QU.  
Phone: 01737 555680 Email: [enquiries@chipsteadplayers.org](mailto:enquiries@chipsteadplayers.org)



[instagram.com/the\\_courtyard\\_theatre](https://www.instagram.com/the_courtyard_theatre)

[www.facebook.com/courtyardtheatre](https://www.facebook.com/courtyardtheatre)



Charitable Incorporated Organisation number 1193889



**Directed by Emily Foster**  
**with the assistance of**  
**Jane Foster**  
**6th - 10th September 2022**

**in support of**  
**akt**

This amateur production of *Moonfleece* is presented by arrangement with  
Concord Theatricals Ltd. on behalf of Samuel French Ltd.  
[www.concordtheatricals.co.uk](http://www.concordtheatricals.co.uk)

**IMPORTANT—SAFETY AT THE COURTYARD THEATRE**

All gangways, passageways and staircases shall be kept entirely free from chairs or any other obstruction, and no person shall be allowed to sit or stand during any performance or entertainment in such gangways, passageways and staircases. The public shall be permitted to leave by all exits and entrance doors after each performance or entertainment.

**CAMERAS, MOBILE PHONES OR OTHER FILMING OR RECORDING DEVICES  
MAY NOT BE USED DURING THE PERFORMANCE.**

# RIZZLE DIZZLE

with *Miranda*



Join us for  
dance fitness classes  
with a '**showtime**' vibe!

DAY	TIME
<b>TUESDAYS:</b> St Ann's R C Church, 4 Brighton Rd, Banstead SM7 1BS	9.30 - 10.30am
<b>THURSDAYS:</b> Nork Community Centre, Nork Way SM7 1JN	9.30 - 10.30am

Easy to follow moves and suitable for all abilities

Music from movies and musicals

Qualified fitness instructor

Experienced in musical theatre



**Book your class:**

**[bookwhen.com/mirandapalmer](https://bookwhen.com/mirandapalmer)**

**For more details contact Miranda Palmer**

★ 07989 879832 ★ [hello@miranda.dance](mailto:hello@miranda.dance)





# COURTYARD THEATRE

CHIPSTEAD PLAYERS

## **The Chipstead Players**

Charitable Incorporated Organisation number 1193889

**President: Kate Perry**

### **Trustee Board:**

**Chair: Anne Thorn**

**Finance Director: David Perry**

**Director of Administration: Rosie Bottomley**

**Artistic Director: Julie Cumbo**

**Theatre Director: Anne Franks**

**Productions Manager: Marie Ricôt**

**Membership: Lorraine Bygraves**

**Publicity: Britt Adams**

**Youth: Debs Brooks**

**The Chipstead Players** present seven productions each season, covering the full range of drama, comedy, musical theatre and pantomime. We have an excellent reputation for the quality of our shows and with a loyal group of supporters we are able to make the most of the wonderful facility which is The Courtyard Theatre.

Our membership spans all ages, but there are many varied roles to play besides those on stage! The whole enterprise is run by volunteers, so we are always keen to welcome new recruits for backstage roles, including administration as well as technical ones. If you are interested in finding an absorbing hobby then we can help!

We would love you to consider whether you could get more involved with the theatre, and if you would like to take the next step in joining us, please look for more information online at:

**[www.chipsteadplayers.org](http://www.chipsteadplayers.org)**

or send an email to [enquiries@chipsteadplayers.org](mailto:enquiries@chipsteadplayers.org)



smile.amazon.co.uk



**COURTYARD  
THEATRE**  
CHIPSTEAD PLAYERS

Do you already buy items from Amazon? GREAT!

Next time log on using **smile.amazon.co.uk**,  
register to support The Chipstead Players,  
and future purchases will automatically benefit our theatre.



Smile.amazon is the same Amazon you know. Same products, same prices, same service. Almost everything qualifies and you'll never pay more but, as a registered charity, our theatre will receive a 0.5% commission.

## Moonfleece

Set in a derelict tower block in 2005, Moonfleece explores themes of racism and homophobia while also touching on love, friendship, acceptance, truth and identity. The play follows the story of Curtis as he endeavours to find the truth about his brother. This leads him back into his old flat, where he and his bodyguards find an unexpected inhabitant. Various characters of different backgrounds and relations to Curtis come in, which ultimately leads to a séance run by the eccentric Nina.

Secrets and lies are unveiled through regular links to fairy stories and through 'street entertainers supreme', Zak and Link.



Enter a world of enchantment and wonder, dive into Curtis' past and let these talented actors spin the web of a story before your very eyes.



# Cast

in order of appearance

Tash Chant	–	Link
Sam Norris	–	Tommy
Louis Higham	–	Gavin
Oliver Horle	–	Curtis
Alex Hilder	–	Alex
Asher Byrne	–	Jez
Lola Rush-Miller	–	Sarah
Beth Brooks	–	Nina
Charlie McCarthy	–	Zak
Bradley Adams	–	Wayne
Olivia Thynne	–	Stacey

The action takes place in a derelict tower block  
in the east end of London, the year is 2005.



# Backstage Crew

Production Assistant	Verity Ridout
Stage Manager	Monty Camisa Bundy
Sound Design and Operation	Ian Grayson
Lighting Design and Operation	James Willis
Costume	Rosie Hannon
Moonfleece Jacket	Verity Ridout
Prompt	Vicky Van Manen
Accent Coach	Lucy Betts
Set Design and Construction Lead	Geoff Dunstan
Set Construction	Terry Bryden Andy Pitman
Furniture and Set Dressing	Emily Foster Jane Foster Verity Ridout
Properties	Meryl Jones Millie Champion Emilie Champion
Photography	Steve Brand
Original Music (composed and performed by)	Megan Cunnington
Programme	Anne Thorn

## PLEASE NOTE:

The auditorium doors will not be opened until 10 minutes before curtain up.

Please order your interval drinks at the bar before the performance commences. The bar will close 30 minutes after the final curtain.

A hearing loop is installed in the auditorium.

To make use of it, please turn hearing aids to the 'T' position.



**Emily Foster** – she/her  
*Director*

Emily has appeared in a wide variety of shows having joined The Courtyard Theatre in 2011. Some of her favourite productions were: *Oliver!*, *Hospital Food*, *Blue Stockings* and the theatre's recent Christmas production, *Goodnight Mister Tom*. When not at the theatre, Emily teaches primary school and loves to watch West End shows. Having performed for years, Emily has been itching to direct, and *Moonfleece* has provided the perfect opportunity. Before lockdown, she hoped to be in it, but as she is now no longer a youth member, she has still been very much involved in this intriguing and mysterious play with themes that are so pertinent in the modern world.

Emily hopes you enjoy watching this interesting play as much as she has loved directing it. She would like to thank her mum, Jane, for all her support and advice as she hopefully begins to direct more shows.

Favourite fairy story – *The Ugly Duckling*



**Jane Foster** – she/her  
*Co-director*

Jane has appeared in many productions at the Courtyard Theatre including *God of Carnage*, *The Children*, *Children's Hour*, *Splendour*, *Blue Stockings* and *Calendar Girls*. With her husband, Nick, she has co-directed two previous September productions; *Mugged and Taking Breath* and *The Sneeze*. Jane has really enjoyed getting to work with her daughter, Emily, now on this production and hopes that Emily will go on to direct many more shows at Chipstead! She is very pleased that *Moonfleece* has finally come to fruition after a Covid delay; she has enjoyed working with such talented young adults.

Favourite fairy story – *The Princess and the Pea*



## CAST BIOGRAPHIES



Tash Chant - she/her  
*Link*

Tash only joined The Chipstead Players this summer, with *Moonfleece* being her first show here. She is 18 and studied theatre at the Brit School for four years, finishing with her graduating show of *Wuthering Heights*. As well as performing on stage, Tash has acted in various short films, some being *Nic\_unextinct*, *WISH* and *The Last Piece of the Puzzle*.

Favourite fairy story: *The Three Little Pigs*



Sam Norris  
*Tommy*

This is Sam's fourth production with the Chipstead Players. His debut role was Long John Silver in *Treasure Island*, moving to David Hartridge and Policeman in *Goodnight, Mister Tom*, and the sorrowful Daniel in *The Last of the Haussmans*. This will be Sam's last performance for a while at the Courtyard Theatre as he is going on to study at Royal Holloway University of London and hopes to pursue an acting career alongside his studies. Sam is thrilled to be in *Moonfleece* and hopes you will enjoy the play.

Favourite fairy story: *Rumpelstiltskin*



Louis Higham – he/him  
*Gavin*

Louis, 14, is studying at St Bede's in Year 10. This is Louis' second show at The Courtyard, having played Reilly in *Our Day Out* earlier this year. Previously, Louis played Lysander in *A Midsummer Night's Dream* in Kingswood. Louis is a very accomplished football and rugby player. He is really looking forward to playing Gavin and acting in a new style of play.

Favourite fairy story – *Jack and the Beanstalk*



Oliver Horle  
*Curtis*

This is Oliver's 8th production at the Courtyard Theatre, his first show being *The Ash Girl* in 2018 and more recently appearing in *On Golden Pond* and *Our Day Out*. Oliver is currently enjoying himself at college and will be taking his A-Levels next year. He's looking forward to performing *Moonfleece* alongside everyone and has enjoyed rehearsing this summer.

Favourite fairy story – *Tinderbox*



Alex Hilder - she/her  
*Alex*

Alex attends St. Bedes School in Redhill. She is beginning Year 10 in September and will start doing her GCSEs. As well as acting and doing LAMDA exams, she also enjoys taking part in sports and playing the saxophone - something she has done for 6 years. This is Alex's second play with the Chipstead Players; she also took part in *Goodnight, Mister Tom* over Christmas.

Favourite fairy story: *Goldilocks and the Three Bears*



Asher Byrne – he/him  
*Jez*

Asher is due to begin sixth form in September and is really looking forward to studying A Level drama. This is his third show at The Courtyard Theatre and he has been enjoying rehearsing throughout the summer. This play contrasts the other productions he has performed in in the past, which has been a great challenge and adventure for him.

Favourite fairy story – *Asher prefers Ben 10*



Lola Rush-Miller – she/her  
*Sarah*

This is Lola's fourth show at the Courtyard Theatre having previously played Squire Trelawney in *Treasure Island*; Miss Miller in *Goodnight, Mister Tom* and the Headteacher and Mrs Roberts in *Our Day Out*. Lola is very excited to play Sarah and tackle a challenging lead role. She hopes you enjoy seeing the show as much as she has enjoyed taking part.

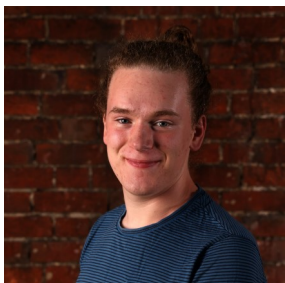
Favourite fairy story – *Rapunzel*



Beth Brooks - she/her  
*Nina*

Beth's acting experience began at just five years old in a production of *Peter Pan*. This sparked her love for theatre and since then she has taken part in lots of amateur productions, including *Joseph and The Technicolour Dreamcoat*. She went on to study GCSE Drama and A level Theatre Studies but ultimately opted for a career in Psychology. Beth took break from acting but recently co-directed *Our Day Out*. This rekindled her love for the theatre. *Moonfleece* will be Beth's debut performance at the Courtyard Theatre.

Favourite fairy story: *Shrek*

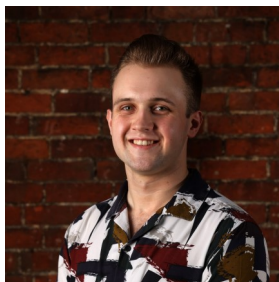


Charlie McCarthy – he/him  
*Zak*

Charlie can't wait for the Courtyard Theatre to be awash with tales of opposing politics and rejected love in this gritty play. Unlike his previous roles in *Treasure Island*, *Our Day Out* and *Wendy and Peter Pan*, which involved swords, guns, and a hip flask, Charlie now finds himself wearing a Moonfleece in his role as the storytelling Zak. When he isn't taking to the stage, Charlie enjoys watching plays in London and making short films as part of his college course. He has really cherished working with the cast and hopes you enjoy the show.

Favourite fairy story – *The Magic Porridge Pot*





Bradley Adams  
*Wayne*

Bradley has been performing at the Courtyard Theatre since 2016 and his first production was *Bugsy Malone*. He has enjoyed every production he has taken part in! These include *Blue Stockings*, *Hospital Food* and *Wendy and Peter Pan*. Since the lockdowns ended, he took a brief stint helping to direct *Treasure Island* and *Our Day Out* but was thrilled to be offered an opportunity to get back onto the stage in this play.

Favourite fairy story – *Cinderella*



Olivia Thynne - she/her  
*Stacey*

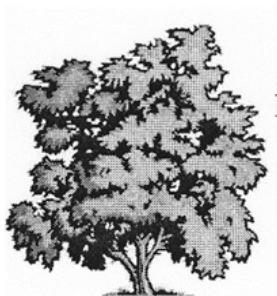
Olivia has been a member of The Chipstead Players for 6 years now and has been cast in *Bugsy Malone*, *Ash Girl* and many more, as well as taking the lead part in *Anne of Green Gables*. When Olivia isn't acting, you can still usually find her backstage helping out in any way she can. Olivia has really enjoyed getting to know new faces in the cast and has relished all the rehearsals where she can embrace Stacey's upbeat personality.

Favourite fairy story: *Cinderella*

# N W J BIGNELL LANDSCAPES

Quality work by local family business established 45 years.

**PAVING, BLOCK PAVING, WALLING, TURFING,  
FENCING, PONDS**



For a free estimate call

Gary on

01737 551975

mobile: 07976 625870





# Development through drama



HELEN O'GRADY  
- DRAMA ACADEMY -

**Confidence**  
**Communication**  
**Creativity**

*42 years' international experience*

**All children welcome aged 5 - 18 yrs**

**Classes at ● Chipstead (at The Courtyard Theatre) ●**  
**Croydon ● Purley ● Banstead ● Sanderstead ● Selston**  
**Wallington ● Waddon ● Park Hill ● Beckenham ● Norbury**  
**Upper Norwood ● West Wickham ● Thornton Heath**

**Call us on: 020 8667 9812**

**[www.dramaschoolforkids.co.uk](http://www.dramaschoolforkids.co.uk)**

# Akt – an LGBTQ+ youth homelessness charity

No person should have to choose between a safe home and being who they are.

Founded in 1989, akt was established to ensure LGBTQ+ identifying people receive necessary care and support that they deserve.



Akt found that often, people who come out or are outed are made homeless. 77% of homeless LGBTQ+ identifying people thought that their sexuality was the reason for their homelessness. Once on the streets, members of the LGBTQ+ community are more likely to be subject to violence; receive threats; be discriminated against; develop substance misuse and experience sexual exploitation.

Akt helps young people between the ages of 16 and 25 feel safe in a crisis, find emergency accommodation, access specialist support and develop skills to achieve life goals.

Akt provide many services including access to specialists, accommodation, mentors, youth engagement programmes, online hub and fundraising events.

We are really pleased to be able to support this charity and their amazing work. If you feel able to, please provide a contribution to akt so they can continue all their brilliant work. There will be cast members with collection buckets at the end of the show. Alternatively, you can use the QR code to donate online.



You can read more about the work akt do and how you can support them further by going to their webpage: [akt.org.uk](http://akt.org.uk)

# The White Hart, Chipstead



## Daily menus of fresh food, cask ales and wine

---

If you have reserved and have tickets for this evening's performance, you can obtain a 10% discount on your food bill at the White Hart, Chipstead.

It's best to book, but we're open all day, so we're just the thing for a spot of pre-performance supper. Please ask Lauren in the pub for details.

---

The White Hart, Hazelwood Lane, Chipstead, Surrey, CR5 3QW  
01737 554 455 • [white.hart.chipstead@brunningandprice.co.uk](mailto:white.hart.chipstead@brunningandprice.co.uk)  
[www.whitehart-chipstead.co.uk](http://www.whitehart-chipstead.co.uk) [f/whitehartchipstead](https://www.facebook.com/whitehartchipstead)